

Big Data and AI: Think Patients First

Shonta Chambers, MSW

November 4, 2021

**Quantitative Imaging Workshop XVIII: Optimizing Thoracic Imaging to Detect and
Manage Early Lung Cancer and COPD**

What can we learn from other areas?

The historic experience of minorities and other “data informed” algorithms

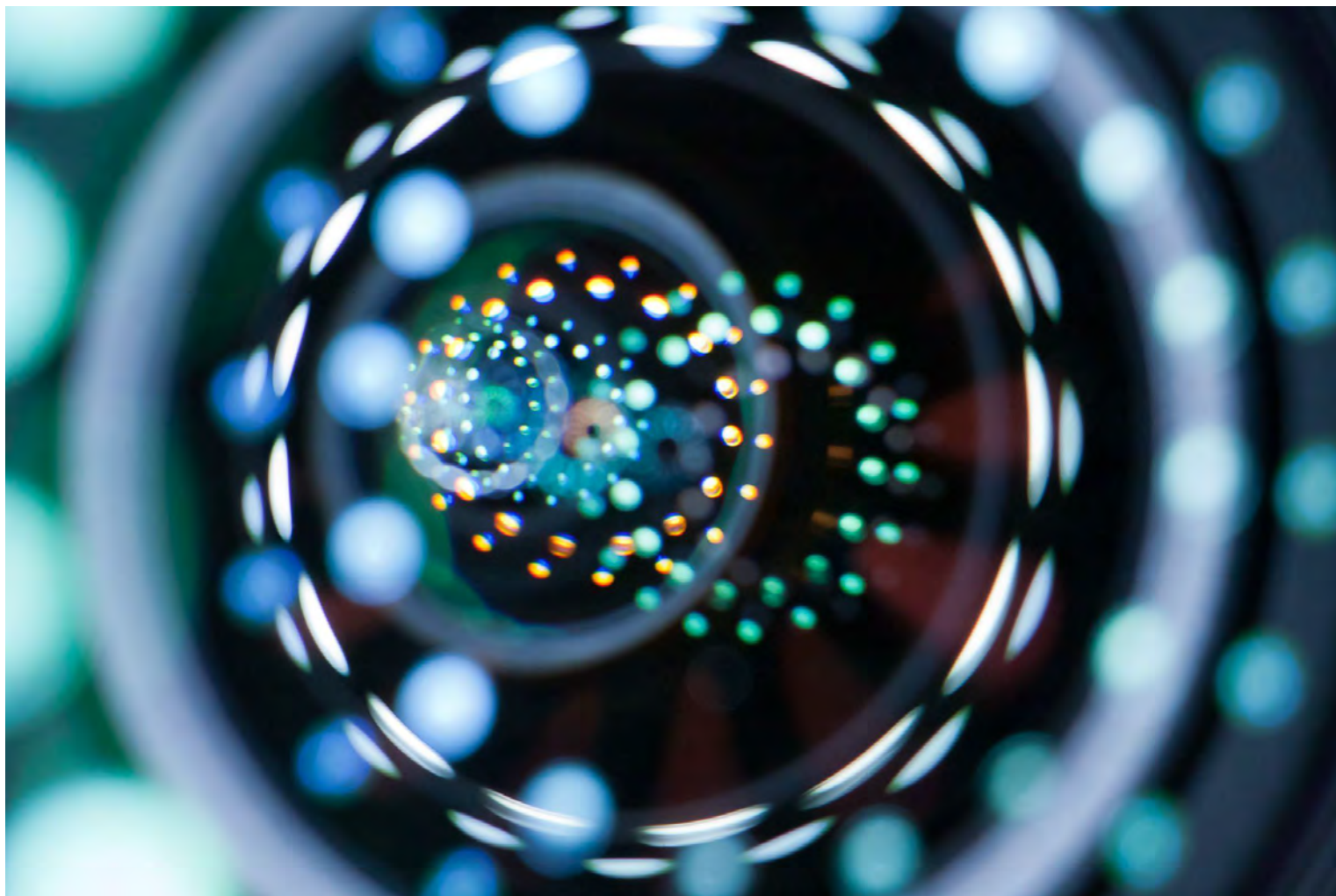
U.S. Credit Market- Unbiased algorithms were supposed to fix that. They haven't!

Human Resource Sourcing algorithms –Early lesson learned by Amazon

Criminal Justice Systems

Educational Systems

LOOKING THROUGH AN EQUITY LENS



Questions we must ask ourselves as it relates to patients

- ❓ What do we expect from an algorithm to help improve the patient's experience and health related outcomes?
- ❓ Should we be thinking about algorithms in a way that informed decisions or should we be thinking about algorithms in a way that ensures equity?
- ❓ Whose at the table? Whose not at the table?
- ❓ What else does it do? And what does it not do?



Everyone may not be on board, including patients



About

NEWS & COMMENTARY

How Artificial Intelligence Can Deepen Racial and Economic Inequities

The Biden administration must prioritize and address all the ways that AI and technology can exacerbate racial and other inequities.

July 13, 2021

TRUST

TRUST

SPECIAL REPORT

An invisible hand: Patients aren't being told about the AI systems advising their care



By Rebecca Robbins and [Erin Brodwin](#) July 15, 2020

Reprints



The patient algorithm

- Patient/Provider Relationship
- Transportation (including parking cost)
- Maintenance of Employment
- Income
- Cost of Living (rent, mortgage, utility)
- Childcare
- Secondary Education for children
- Future for children
- Financial Debt
- Medical Debt (Treatment cost, including pharmacologic and medical visits)
- Quality of Life (treatment impact)



Patient's First





Shonta Chambers, MSW
EVP Health Equity Initiatives and Community Engagement
Patient Advocate Foundation
421 Butler Farm Road, Hampton, VA
Email: Shonta.Chambers@patientadvocate.org
LinkedIn: www.linkedin.com/in/shontachambers